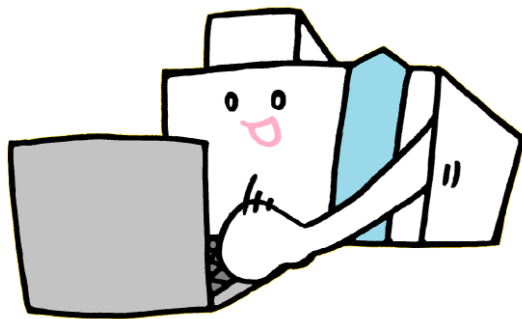


# Connecting to the Internet in the Komaba Library



## Using PC in the Library Using ECCS Terminals and Printers

You can use the Educational Campus-wide Computing System (ECCS) terminals and printers at the Media Park on the 1F of the Komaba Library.

You need UTokyo Account to use the ECCS.

### Initial Use Procedures

**Search for "Tokyo University ECCS" on the web.**



**Visit the official ECCS page**



**Click on the ECCS application menu**



**Sign in with your UTokyo Account**



**Application**

- If the UTokyo Account password is the default or has expired, you cannot log in.  
First, change your password for the UTokyo Account.
- Faculty staff who are unsure if you have a UTokyo Account, please ask your department staff in charge of the personnel information system.

### Contact

- Information Service Section, Komaba Library,  
The University of Tokyo
- Mail : [cill@lib.c.u-tokyo.ac.jp](mailto:cill@lib.c.u-tokyo.ac.jp)

# UTokyo Wi-Fi

## To Use Wireless LAN

You can use UTokyo Wi-Fi in the Komaba Library. However, the Wi-Fi connection may sometimes be insufficient, depending on usage conditions.

UTokyo Wi-Fi account has an expiration date, and you will need to apply it each time.

### 1 Registration of a Mail Address

You need to register your mail address with the following system in advance.

- Student・・・UTAS
- Faculty or staff・・・Personnel information system

Mail address will be valid the next day.  
Please proceed to apply for UTokyo Wi-Fi after that.

### 2 Applying for UTokyo Wi-Fi Account

Access the URL below on the network in Japan and apply for a UTokyo Wi-Fi account.

[https://utelecon.adm.u-tokyo.ac.jp/en/utokyo\\_wifi/](https://utelecon.adm.u-tokyo.ac.jp/en/utokyo_wifi/)

 **UTokyo WiFi**

# Non-UTokyo Members

E-resources such as databases, e-journals/books contracted for UTokyo members are unavailable.

- Those from universities/institutions participating in eduroam can use eduroam. Please obtain an account at your institution.
- Those who have a short-term guest Wi-Fi account issued by UTokyo members can use the network with SSID "eduroam."
- Non-UTokyo members can use the wireless LAN with SSID: UTokyo-Guest.  
Please see below for details.

"FREE Wi-Fi PASSPORT" page by SoftBank.

<https://www.softbank.jp/en/mobile/special/freewifi/en/>

# Help & Support

## ECCS/Media Park

### 1 Website

- ECCS Website  
Users' Handbook, FAQ  
<https://www.ecc.u-tokyo.ac.jp/en/>
- ECCS Tutors' website  
(System Support Assistants)  
<https://www.sodan.ecc.u-tokyo.ac.jp/en/>
- utelecon  
Online Class/Web Conference Portal Site  
@ the University of Tokyo  
<https://utelecon.adm.u-tokyo.ac.jp/en/>

### 2 Tutors (System Support Assistants)

ECCS tutors will answer your questions about the system.

The tutor is at the PC seat  
near this signboard at the  
Media Park entrance.



Tutor's schedule (JP)

<https://gm.sodan.ecc.u-tokyo.ac.jp/gm/shift>

### 3 Help Desk at the Komaba Information Education Building

- Service Hours  
Weekdays 9:00-12:00, 13:00-17:00
- Place  
1st floor of Information Education Bldg.
- TEL  
03-5454-6140 (extension number 46140)