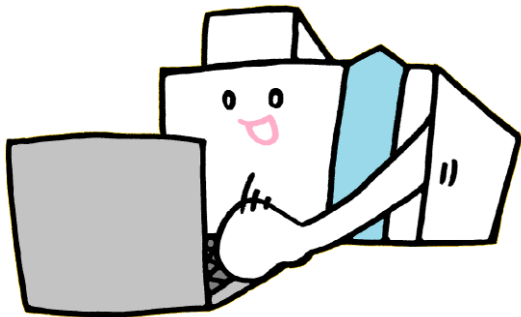


Connecting to the Internet in the Komaba Library



2021.10

Using PC in the Library

Using ECCS Terminals and Printers

You can use the ECCS terminals and printers at the Media Park on the 1F of the Komaba Library.

You need UTokyo Account to use the ECCS.

For Students

ECCS services will be available **one hour after** completing the ECCS Online New User Information Seminar.

You can take the seminar anytime, anywhere.

Online New User Information Seminar

<https://www.ecc.u-tokyo.ac.jp/onlineseminar.html>

If you take the seminar with an ECCS terminal, please login to Mac OS using a guest account displayed at the bottom of the screen.

Please use your earphones.

For Faculty and Staff

Please access the ECCS Application Menu and apply for your ECCS account.

UTokyo Account is required to log in to the ECCS Application Menu.

Issuing a New Account

https://www.ecc.u-tokyo.ac.jp/en/announcement/2020/03/02_3127.html

If you are not sure about your UTokyo Account, please contact your department staff in charge of the personnel information system.

- If the UTokyo Account password is the default or has expired, you cannot log in. First of all, please change your password for the UTokyo Account.
- UTokyo WiFi Account expires at the end of April and October. You need to gain the account every semester.

UTokyo WiFi

To Use Wireless LAN

You can use UTokyo WiFi on each floor of the Komaba Library. However, there are some places where radio waves are difficult to reach.
UTokyo Account is necessary to use.

1 Registration of a Mail Address

You need to register your mail address with the following system in advance.

- Student・・・UTAS
- Faculty or staff・・・Personnel information system

Mail address will be valid the next day.
Please proceed to apply for UTokyo WiFi after that.

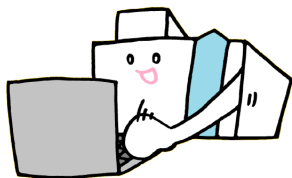
2 Applying for UTokyo WiFi Account

Access the URL below on the network in Japan and apply for a UTokyo WiFi account.

<http://www.u-tokyo.ac.jp/ja/administration/dics/service/wifi.html>

 Search "UTokyo WiFi"

You can log in to ECCS terminals with a guest account.



Cautions for Use

The use of the ECCS and UTokyo WiFi is **limited to educational and research purposes only**.

You must follow these guidelines for use.

- The University of Tokyo Information Ethics Guidelines
https://www.u-tokyo.ac.jp/adm/cie/ja/index_00003.html
- Guidelines for Information Ethics and Computer Use
<https://www.u-tokyo.ac.jp/content/400137541.pdf>

Notes

- **Bringing beverages is not permitted** at the Media Park.
- **Do not use a PC or something making a noise at the Silent Area, at the south side carrels on 3F.**

Information

- Information Service Section, Komaba Library, The University of Tokyo
- Service Counter: Reference Counter
- Service Hours: Monday to Friday 9:00-17:00
- TEL: 03-5454-6093
- Mail: cill@lib.c.u-tokyo.ac.jp

Help & Support for ECCS Users

1 Website

- Users' Handbook:
<https://www.ecc.u-tokyo.ac.jp/files/tebiki-e-2017.pdf>
- Hyper Work Book(in Japanese)
<http://hwb.ecc.u-tokyo.ac.jp/>
- FAQ(ECCS website):
<https://www.ecc.u-tokyo.ac.jp/en/itc-lms/faq.html>
- ECCS Tutors(System Support Assistants)
<https://www.sodan.ecc.u-tokyo.ac.jp/en/>

2 Tutors (System Support Assistants)

ECCS tutors will answer questions about the system. The seat with the i-sign at media park is the tutor's seat.



3 Help Desk at the Komaba Information Education Building

- Service Hours: Weekdays 9:00-12:00, 13:00-17:00
- Place: 1st floor of Information Education Bldg.
- TEL: 03-5454-6140(Internal: 46140)
- Website:
<https://www.ecc.u-tokyo.ac.jp/en/contact.html>