

# What's GACoS?

How can I find useful information when writing an academic essay?

I want to read some old newspapers

I'm looking for the article that my professor indicated in the lecture. I heard that I could find it at the library, but how can I find it?



GACoS

<https://www.dl.itc.u-tokyo.ac.jp/gacos/e/index-e.html>

2021.04

## GACoS is a collection of database links for finding academic information such as journal articles or newspaper articles.

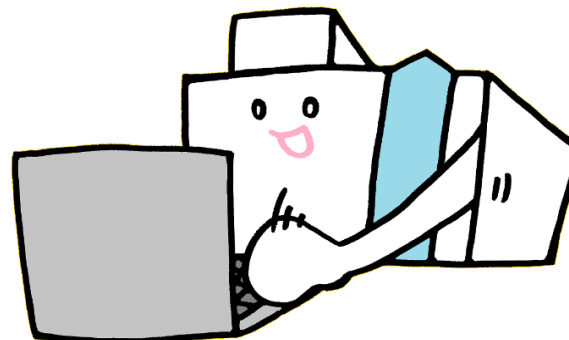
At the University of Tokyo, you can use E-journals, E-books\*1 and databases\*2 of various fields such as case law and statistical data. You can get various information by using GACoS.

Moreover, GACoS provides you the things below.

1. The schedule of the Database Training Course.
2. How to access databases and e-resources from off-campus.

\*1 E-journal/E-book: Electronic version of journal article/book

\*2 Database: A searchable collection of information in a specific field



## I want to know how to write an academic paper

The Database Training Courses are held sometimes.

More information is available on the Course Schedule tab.

You can download the handouts of the Database Training Course from the "Quick Guide".

"Academic Paper Support Book: Start here" is also useful.

## Can I read old newspapers online?

Yes, you can access various newspaper databases by selecting "Newspaper Articles" in "Source Type" of "Find Database" in GACoS.

## Is there a database accessible from off-campus?

Of course, yes. Please check the website below.

### List of Databases and E-journals

[https://www.dl.itc.utokyo.ac.jp/sslvpn/service\\_e.html](https://www.dl.itc.utokyo.ac.jp/sslvpn/service_e.html)

### How to access databases and e-journals from off-campus.

<https://www.dl.itc.u-tokyo.ac.jp/gacos/e/faq-e/gakugai-e.html>



### Website

△ <https://www.lib.u-tokyo.ac.jp/en/library/komaba>

Twitter: @UTokyoKomabaLib

### Contact Us

Information Service Section, Komaba Library, the University of Tokyo

☎ 03-5454-6093 ✉ [cill@lib.c.u-tokyo.ac.jp](mailto:cill@lib.c.u-tokyo.ac.jp)

# How To Use GACoS

## Frequently Used Databases

Home Course Schedule Manual Quick Guide FAQ Academic Paper Support Book: Start here

### COVID\_19

◆ Publisher response to new coronavirus infections

### NEWS

For the most Japan

- ◆ Renewal of ... (2021.3.1) **New**
- ◆ "Local institutions and Decentralization :Online" is now available. (2021.2.19)
- ◆ The Trial of "Oxford Medicine Online" (until April 30, 2021)
- ◆ The Trial of "Isho.jp" (until March 31, 2021)
- ◆ The Trial of "Staudinger BGB Kommentar" and "juris Zusatzmodul" of Juris Online (until March 31, 2021)
- ◆ The Trial of "CHUNICHI & TOKYO NEWS DATABASE" (until March 31, 2021)

⇒ Previous informations

### Find Database

This portal site links to the databases available at the University of Tokyo, and to the Internet sites providing valuable scientific information.

Manuals for Each Database (Japanese and English)

You can download handouts of the workshops in PDF format.

Database Training Course Schedule

### Source type

ALL  
Encyclopedic & Dictionary Tools  
Books  
Journal Articles  
Doctorial Dissertations  
Newspaper Articles  
Scientific/Technological Reports  
Court Decisions & Laws  
Parliamentary & Official Publications  
Statistical data  
Patents  
Old Documents & Rare Books  
Online Academic Information  
Internet Resources  
Institutional Repository  
Others

### Source Language

ALL

### Access to full text

Linked full text

### Campus Only / Free Access

ALL

Search Clear

### Source Language

ALL

### Access to full text

Linked full text

### Campus Only / Free Access

ALL

Search Clear

### Browse by Database Name

A	B	C	D	E	F	G	H	I	J	K	L	M	N	O	P	Q	R	S	T	U	
V	W	X	Y	Z																	

You can find a database from the first letter of its name.

### Quick Link to Database

\* means "Campus Only"

- ◆ [TREE \(UTokyo REsource Explorer\)\\*](#) except Internet Explorer
- ◆ [UTokyo OPAC](#)
- ◆ [E-journal & E-book Portal\\*](#)
- ◆ [NDL ONLINE \(NDL-OPAC\)](#)
- ◆ [CiNii Articles](#)
- ◆ [CiNii Books](#)
- ◆ [Web of Science Core Collection\\*](#)
- ◆ [Scopus\\*](#)
- ◆ [Google Scholar](#)
- ◆ [JapanKnowledge Lib\\*](#)
- ◆ [New RefWorks | Legacy RefWorks](#)
- ◆ [Mendeley](#)

### Access from off-campus

- ◆ [About "SSL-VPN Gateway Service" or "Authentication Gateway Service"](#)

Access from Off Campus  
[SSL-VPN Gateway](#)

Access from Off Campus  
[Authentication Gateway Service](#)

- ◆ Available online services from off-campus (campus only site)

### FAQ

- ◆ [E-resources for Use](#)
- ◆ [How to use Mendeley](#)
- ◆ [How to use EndNote basic](#)

### Link

- ◆ [The University of Tokyo](#)
- ◆ [Mathematics Center](#)
- ◆ [Information Center for Computing System \(E-ICS\)](#)
- ◆ [UTokyo](#)
- ◆ [A](#)

